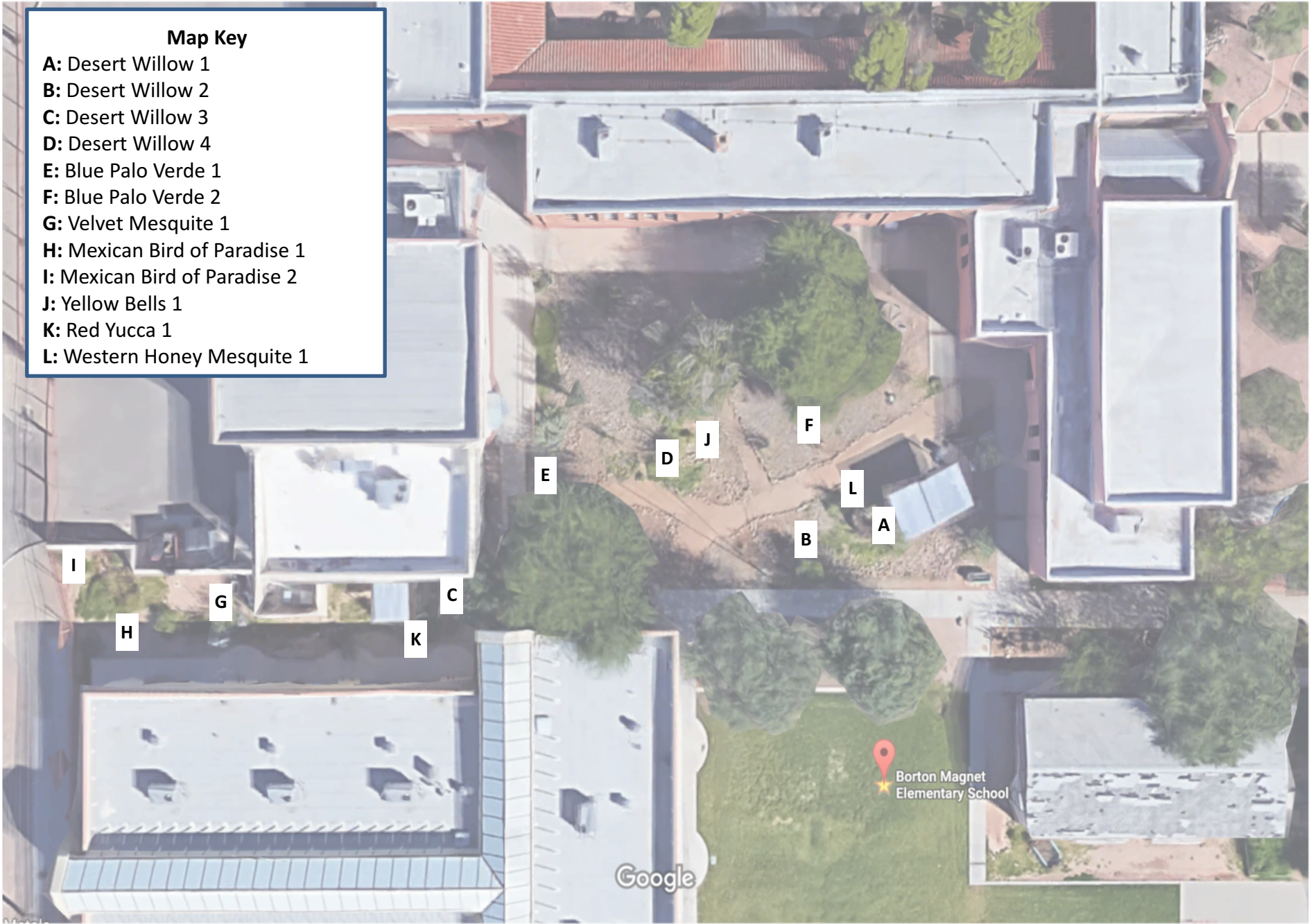


Map Key

- A:** Desert Willow 1
- B:** Desert Willow 2
- C:** Desert Willow 3
- D:** Desert Willow 4
- E:** Blue Palo Verde 1
- F:** Blue Palo Verde 2
- G:** Velvet Mesquite 1
- H:** Mexican Bird of Paradise 1
- I:** Mexican Bird of Paradise 2
- J:** Yellow Bells 1
- K:** Red Yucca 1
- L:** Western Honey Mesquite 1



NATURE'S NOTEBOOK FIELD GUIDE

GROUP NAME: BORTON INTERIOR COURTYARD

Scientific Name: *Chilopsis Linearis*

Nickname: Desert Willow 1

Site: Borton Interior Courtyard

Location:



Leaves:



Flowers or Flower Buds:



Fruits:



NATURE'S NOTEBOOK FIELD GUIDE

GROUP NAME: BORTON INTERIOR COURTYARD

Scientific Name: Chilopsis Linearis

Nickname: Desert Willow 2

Site: Borton Interior Courtyard

Location:



Leaves:



Flowers or Flower Buds:



Fruits:



NATURE'S NOTEBOOK FIELD GUIDE

GROUP NAME: BORTON INTERIOR COURTYARD

Scientific Name: Chilopsis Linearis

Nickname: Desert Willow 3

Site: Borton Interior Courtyard

Location:



Leaves:



Flowers or Flower Buds:



Fruits:



NATURE'S NOTEBOOK FIELD GUIDE

GROUP NAME: BORTON INTERIOR COURTYARD

Scientific Name: Chilopsis Linearis

Nickname: Desert Willow 4

Site: Borton Interior Courtyard

Location:



Leaves:



Flowers or Flower Buds:



Fruits:



NATURE'S NOTEBOOK FIELD GUIDE

GROUP NAME: BORTON INTERIOR COURTYARD

Scientific Name: Parkinsonia Florida

Nickname: Blue Palo Verde 1

Site: Borton Interior Courtyard

Location:



Leaves:



Flowers or Flower Buds:



Fruits and Dried Fruits (Seed Pods):



NATURE'S NOTEBOOK FIELD GUIDE

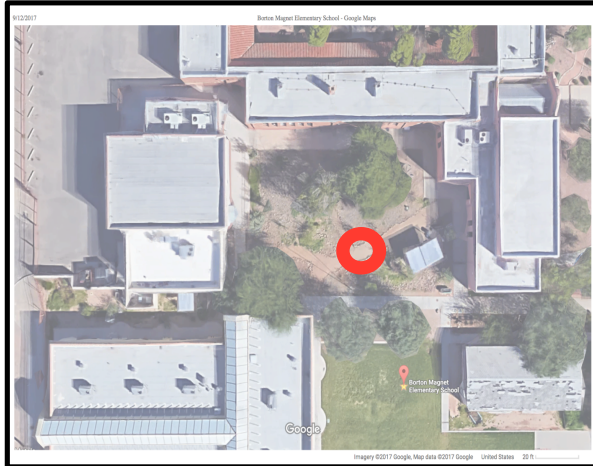
GROUP NAME: BORTON INTERIOR COURTYARD

Scientific Name: Parkinsonia Florida

Nickname: Blue Palo Verde 2

Site: Borton Interior Courtyard

Location:



Leaves:



Flowers or Flower Buds:



Fruits and Dried Fruits (Seed Pods):



NATURE'S NOTEBOOK FIELD GUIDE

GROUP NAME: BORTON INTERIOR COURTYARD

Scientific Name: *Prosopis Velutina*

Nickname: Velvet Mesquite 1

Site: Borton Interior Courtyard

Location:



Leaves:



Flowers or Flower Buds:



Fruits & Dried Fruits (Seed Pods):



NATURE'S NOTEBOOK FIELD GUIDE

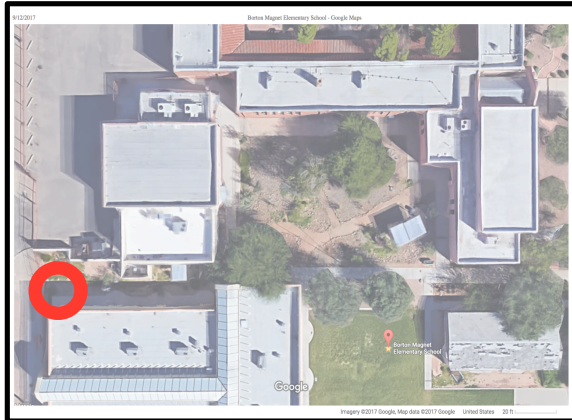
GROUP NAME: BORTON INTERIOR COURTYARD

Scientific Name: *Caesalpinia Pulcherrima*

Nickname: Mexican Bird of Paradise 1

Site: Borton Interior Courtyard

Location:



Leaves:



Flowers or Flower Buds:



Fruits and Seed Pods:



NATURE'S NOTEBOOK FIELD GUIDE

GROUP NAME: BORTON INTERIOR COURTYARD

Scientific Name: *Caesalpinia Pulcherrima*

Nickname: Mexican Bird of Paradise 2

Site: Borton Interior Courtyard

Location:



Leaves:



Flowers or Flower Buds:



Fruits and Seed Pods:



NATURE'S NOTEBOOK FIELD GUIDE

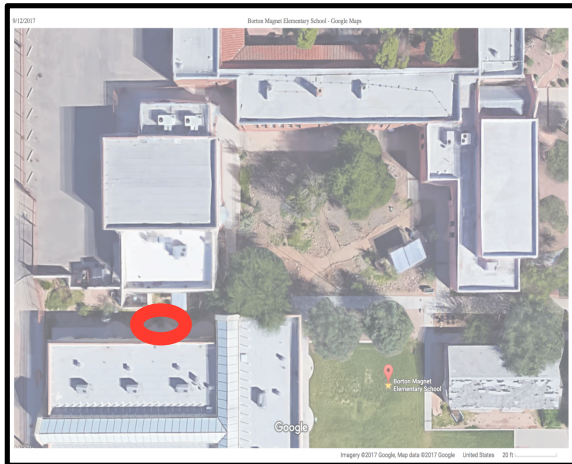
GROUP NAME: BORTON INTERIOR COURTYARD

Scientific Name: Hesperaloe Parviflora

Nickname: Red Yucca 1

Site: Borton Interior Courtyard

Location:



Fruits and Seed Pods:



Dried Fruits, Exposed Seeds



Flowers and Flower Buds:



NATURE'S NOTEBOOK FIELD GUIDE

GROUP NAME: BORTON INTERIOR COURTYARD

Scientific Name: Tecoma Stans

Nickname: Yellow Bells 1

Site: Borton Interior Courtyard

Location:



Leaves:



Flowers and Flower Buds:



Fruits or Seed Pods:



NATURE'S NOTEBOOK FIELD GUIDE

GROUP NAME: BORTON INTERIOR COURTYARD

Scientific Name: *Prosopis Glandulosa*

Nickname: Western Honey Mesquite 1

Site: Borton Interior Courtyard

Location:



Leaves:



Flowers and Flower Buds:



Fruits or Pods:



Scientific Name: Chilopsis Linearis

Nickname: Desert Willow 1

Site: Borton Interior Courtyard

Observer: _____

Date: _____



| Do you see ... | Phenophase | Circle the Value |
|--|------------|--|
| Young Leaves? (small, just unfolding) | Y N ? | Less than 3 3-10 11-100 101-10,000 More than 10,000 |
| Leaves? | Y N ? | Less than 5% 5-24% 25-49% 50-74% 75-94% 95% or more |
| Colored Leaves? (brown or yellow) | Y N ? | Less than 5% 5-24% 25-49% 50-74% 75-94% 95% or more |
| Falling Leaves? | Y N ? | Have leaves recently fallen off? |
| Flowers or Flower Buds? | Y N ? | Less than 3 3-10 11-100 101-10,000 More than 10,000 |
| Open Flowers? | Y N ? | Less than 5% 5-24% 25-49% 50-74% 75-94% 95% or more |
| Fruits? (long, slender green or tan bean) | Y N ? | Less than 3 3-10 11-100 101-10,000 More than 10,000 |
| Ripe Fruits? (brown, opening to show seeds inside) | Y N ? | Less than 5% 5-24% 25-49% 50-74% 75-94% 95% or more |
| Fruits or Seeds on the ground? | Y N ? | Less than 3 3-10 11-100 101-10,000 More than 10,000 |

Scientific Name: Chilopsis Linearis

Nickname: Desert Willow 1

Site: Borton Interior Courtyard

Observer: _____

Date: _____



| Do you see ... | Phenophase | Circle the Value |
|--|------------|--|
| Young Leaves? (small, just unfolding) | Y N ? | Less than 3 3-10 11-100 101-10,000 More than 10,000 |
| Leaves? | Y N ? | Less than 5% 5-24% 25-49% 50-74% 75-94% 95% or more |
| Colored Leaves? (brown or yellow) | Y N ? | Less than 5% 5-24% 25-49% 50-74% 75-94% 95% or more |
| Falling Leaves? | Y N ? | Have leaves recently fallen off? |
| Flowers or Flower Buds? | Y N ? | Less than 3 3-10 11-100 101-10,000 More than 10,000 |
| Open Flowers? | Y N ? | Less than 5% 5-24% 25-49% 50-74% 75-94% 95% or more |
| Fruits? (long, slender green or tan bean) | Y N ? | Less than 3 3-10 11-100 101-10,000 More than 10,000 |
| Ripe Fruits? (brown, opening to show seeds inside) | Y N ? | Less than 5% 5-24% 25-49% 50-74% 75-94% 95% or more |
| Fruits or Seeds on the ground? | Y N ? | Less than 3 3-10 11-100 101-10,000 More than 10,000 |

Scientific Name: Chilopsis Linearis

Nickname: Desert Willow 2

Site: Borton Interior Courtyard

Observer: _____

Date: _____



| Do you see ... | Phenophase | Circle the Value |
|--|------------|--|
| Young Leaves? (small, just unfolding) | Y N ? | Less than 3 3-10 11-100 101-10,000 More than 10,000 |
| Leaves? | Y N ? | Less than 5% 5-24% 25-49% 50-74% 75-94% 95% or more |
| Colored Leaves? (brown or yellow) | Y N ? | Less than 5% 5-24% 25-49% 50-74% 75-94% 95% or more |
| Falling Leaves? | Y N ? | Have leaves recently fallen off? |
| Flowers or Flower Buds? | Y N ? | Less than 3 3-10 11-100 101-10,000 More than 10,000 |
| Open Flowers? | Y N ? | Less than 5% 5-24% 25-49% 50-74% 75-94% 95% or more |
| Fruits? (long, slender green or tan bean) | Y N ? | Less than 3 3-10 11-100 101-10,000 More than 10,000 |
| Ripe Fruits? (brown, opening to show seeds inside) | Y N ? | Less than 5% 5-24% 25-49% 50-74% 75-94% 95% or more |
| Fruits or Seeds on the ground? | Y N ? | Less than 3 3-10 11-100 101-10,000 More than 10,000 |

Scientific Name: Chilopsis Linearis

Nickname: Desert Willow 2

Site: Borton Interior Courtyard

Observer: _____

Date: _____



| Do you see ... | Phenophase | Circle the Value |
|--|------------|--|
| Young Leaves? (small, just unfolding) | Y N ? | Less than 3 3-10 11-100 101-10,000 More than 10,000 |
| Leaves? | Y N ? | Less than 5% 5-24% 25-49% 50-74% 75-94% 95% or more |
| Colored Leaves? (brown or yellow) | Y N ? | Less than 5% 5-24% 25-49% 50-74% 75-94% 95% or more |
| Falling Leaves? | Y N ? | Have leaves recently fallen off? |
| Flowers or Flower Buds? | Y N ? | Less than 3 3-10 11-100 101-10,000 More than 10,000 |
| Open Flowers? | Y N ? | Less than 5% 5-24% 25-49% 50-74% 75-94% 95% or more |
| Fruits? (long, slender green or tan bean) | Y N ? | Less than 3 3-10 11-100 101-10,000 More than 10,000 |
| Ripe Fruits? (brown, opening to show seeds inside) | Y N ? | Less than 5% 5-24% 25-49% 50-74% 75-94% 95% or more |
| Fruits or Seeds on the ground? | Y N ? | Less than 3 3-10 11-100 101-10,000 More than 10,000 |

Scientific Name: Chilopsis Linearis

Nickname: Desert Willow 3

Site: Borton Interior Courtyard

Observer: _____

Date: _____



| Do you see ... | Phenophase | Circle the Value |
|--|------------|--|
| Young Leaves? (small, just unfolding) | Y N ? | Less than 3 3-10 11-100 101-10,000 More than 10,000 |
| Leaves? | Y N ? | Less than 5% 5-24% 25-49% 50-74% 75-94% 95% or more |
| Colored Leaves? (brown or yellow) | Y N ? | Less than 5% 5-24% 25-49% 50-74% 75-94% 95% or more |
| Falling Leaves? | Y N ? | Have leaves recently fallen off? |
| Flowers or Flower Buds? | Y N ? | Less than 3 3-10 11-100 101-10,000 More than 10,000 |
| Open Flowers? | Y N ? | Less than 5% 5-24% 25-49% 50-74% 75-94% 95% or more |
| Fruits? (long, slender green or tan bean) | Y N ? | Less than 3 3-10 11-100 101-10,000 More than 10,000 |
| Ripe Fruits? (brown, opening to show seeds inside) | Y N ? | Less than 5% 5-24% 25-49% 50-74% 75-94% 95% or more |
| Fruits or Seeds on the ground? | Y N ? | Less than 3 3-10 11-100 101-10,000 More than 10,000 |

Scientific Name: Chilopsis Linearis

Nickname: Desert Willow 3

Site: Borton Interior Courtyard

Observer: _____

Date: _____



| Do you see ... | Phenophase | Circle the Value |
|--|------------|--|
| Young Leaves? (small, just unfolding) | Y N ? | Less than 3 3-10 11-100 101-10,000 More than 10,000 |
| Leaves? | Y N ? | Less than 5% 5-24% 25-49% 50-74% 75-94% 95% or more |
| Colored Leaves? (brown or yellow) | Y N ? | Less than 5% 5-24% 25-49% 50-74% 75-94% 95% or more |
| Falling Leaves? | Y N ? | Have leaves recently fallen off? |
| Flowers or Flower Buds? | Y N ? | Less than 3 3-10 11-100 101-10,000 More than 10,000 |
| Open Flowers? | Y N ? | Less than 5% 5-24% 25-49% 50-74% 75-94% 95% or more |
| Fruits? (long, slender green or tan bean) | Y N ? | Less than 3 3-10 11-100 101-10,000 More than 10,000 |
| Ripe Fruits? (brown, opening to show seeds inside) | Y N ? | Less than 5% 5-24% 25-49% 50-74% 75-94% 95% or more |
| Fruits or Seeds on the ground? | Y N ? | Less than 3 3-10 11-100 101-10,000 More than 10,000 |

Scientific Name: Chilopsis Linearis

Nickname: Desert Willow 4

Site: Borton Interior Courtyard

Observer: _____

Date: _____



| Do you see ... | Phenophase | Circle the Value |
|--|------------|--|
| Young Leaves? (small, just unfolding) | Y N ? | Less than 3 3-10 11-100 101-10,000 More than 10,000 |
| Leaves? | Y N ? | Less than 5% 5-24% 25-49% 50-74% 75-94% 95% or more |
| Colored Leaves? (brown or yellow) | Y N ? | Less than 5% 5-24% 25-49% 50-74% 75-94% 95% or more |
| Falling Leaves? | Y N ? | Have leaves recently fallen off? |
| Flowers or Flower Buds? | Y N ? | Less than 3 3-10 11-100 101-10,000 More than 10,000 |
| Open Flowers? | Y N ? | Less than 5% 5-24% 25-49% 50-74% 75-94% 95% or more |
| Fruits? (long, slender green or tan bean) | Y N ? | Less than 3 3-10 11-100 101-10,000 More than 10,000 |
| Ripe Fruits? (brown, opening to show seeds inside) | Y N ? | Less than 5% 5-24% 25-49% 50-74% 75-94% 95% or more |
| Fruits or Seeds on the ground? | Y N ? | Less than 3 3-10 11-100 101-10,000 More than 10,000 |

Scientific Name: Chilopsis Linearis

Nickname: Desert Willow 4

Site: Borton Interior Courtyard

Observer: _____

Date: _____



| Do you see ... | Phenophase | Circle the Value |
|--|------------|--|
| Young Leaves? (small, just unfolding) | Y N ? | Less than 3 3-10 11-100 101-10,000 More than 10,000 |
| Leaves? | Y N ? | Less than 5% 5-24% 25-49% 50-74% 75-94% 95% or more |
| Colored Leaves? (brown or yellow) | Y N ? | Less than 5% 5-24% 25-49% 50-74% 75-94% 95% or more |
| Falling Leaves? | Y N ? | Have leaves recently fallen off? |
| Flowers or Flower Buds? | Y N ? | Less than 3 3-10 11-100 101-10,000 More than 10,000 |
| Open Flowers? | Y N ? | Less than 5% 5-24% 25-49% 50-74% 75-94% 95% or more |
| Fruits? (long, slender green or tan bean) | Y N ? | Less than 3 3-10 11-100 101-10,000 More than 10,000 |
| Ripe Fruits? (brown, opening to show seeds inside) | Y N ? | Less than 5% 5-24% 25-49% 50-74% 75-94% 95% or more |
| Fruits or Seeds on the ground? | Y N ? | Less than 3 3-10 11-100 101-10,000 More than 10,000 |

Scientific Name: Parkinsonia Florida

Nickname: Blue Palo Verde 1

Site: Borton Interior Courtyard



Observer: _____

Date: _____

| Do you see ... | Phenophase | Circle the Value | | |
|--|------------|------------------|------------------|-------------|
| Young Leaves? (small, just unfolding) | Y N ? | Less than 3 | 3-10 | 11-100 |
| | | 101-10,000 | More than 10,000 | |
| Leaves? | Y N ? | Less than 5% | 5-24% | 25-49% |
| | | 50-74% | 75-94% | 95% or more |
| Colored Leaves? (brown or yellow) | Y N ? | Less than 5% | 5-24% | 25-49% |
| | | 50-74% | 75-94% | 95% or more |
| Falling Leaves? | Y N ? | | | |
| Flowers or Flower Buds? | Y N ? | Less than 3 | 3-10 | 11-100 |
| | | 101-10,000 | More than 10,000 | |
| Open Flowers? | Y N ? | Less than 5% | 5-24% | 25-49% |
| | | 50-74% | 75-94% | 95% or more |
| Fruits? (green or tan bean pod) | Y N ? | Less than 3 | 3-10 | 11-100 |
| | | 101-10,000 | More than 10,000 | |
| Ripe Fruits? (tan bean pod) | Y N ? | Less than 5% | 5-24% | 25-49% |
| | | 50-74% | 75-94% | 95% or more |
| Fruits or Seeds on the ground? | Y N ? | Less than 3 | 3-10 | 11-100 |
| | | 101-10,000 | More than 10,000 | |

Scientific Name: Parkinsonia Florida

Nickname: Blue Palo Verde 1

Site: Borton Interior Courtyard



Observer: _____

Date: _____

| Do you see ... | Phenophase | Circle the Value | | |
|--|------------|------------------|------------------|-------------|
| Young Leaves? (small, just unfolding) | Y N ? | Less than 3 | 3-10 | 11-100 |
| | | 101-10,000 | More than 10,000 | |
| Leaves? | Y N ? | Less than 5% | 5-24% | 25-49% |
| | | 50-74% | 75-94% | 95% or more |
| Colored Leaves? (brown or yellow) | Y N ? | Less than 5% | 5-24% | 25-49% |
| | | 50-74% | 75-94% | 95% or more |
| Falling Leaves? | Y N ? | | | |
| Flowers or Flower Buds? | Y N ? | Less than 3 | 3-10 | 11-100 |
| | | 101-10,000 | More than 10,000 | |
| Open Flowers? | Y N ? | Less than 5% | 5-24% | 25-49% |
| | | 50-74% | 75-94% | 95% or more |
| Fruits? (green or tan bean pod) | Y N ? | Less than 3 | 3-10 | 11-100 |
| | | 101-10,000 | More than 10,000 | |
| Ripe Fruits? (tan bean pod) | Y N ? | Less than 5% | 5-24% | 25-49% |
| | | 50-74% | 75-94% | 95% or more |
| Fruits or Seeds on the ground? | Y N ? | Less than 3 | 3-10 | 11-100 |
| | | 101-10,000 | More than 10,000 | |

Scientific Name: Parkinsonia Florida

Nickname: Blue Palo Verde 2

Site: Borton Interior Courtyard

Observer: _____

Date: _____



| Do you see ... | Phenophase | Circle the Value |
|--|------------|--|
| Young Leaves? (small, just unfolding) | Y N ? | Less than 3 3-10 11-100 101-10,000 More than 10,000 |
| Leaves? | Y N ? | Less than 5% 5-24% 25-49% 50-74% 75-94% 95% or more |
| Colored Leaves? (brown or yellow) | Y N ? | Less than 5% 5-24% 25-49% 50-74% 75-94% 95% or more |
| Falling Leaves? | Y N ? | |
| Flowers or Flower Buds? | Y N ? | Less than 3 3-10 11-100 101-10,000 More than 10,000 |
| Open Flowers? | Y N ? | Less than 5% 5-24% 25-49% 50-74% 75-94% 95% or more |
| Fruits? (green or tan bean pod) | Y N ? | Less than 3 3-10 11-100 101-10,000 More than 10,000 |
| Ripe Fruits? (tan bean pod) | Y N ? | Less than 5% 5-24% 25-49% 50-74% 75-94% 95% or more |
| Fruits or Seeds on the ground? | Y N ? | Less than 3 3-10 11-100 101-10,000 More than 10,000 |

Scientific Name: Parkinsonia Florida

Nickname: Blue Palo Verde 2

Site: Borton Interior Courtyard

Observer: _____

Date: _____



| Do you see ... | Phenophase | Circle the Value |
|--|------------|--|
| Young Leaves? (small, just unfolding) | Y N ? | Less than 3 3-10 11-100 101-10,000 More than 10,000 |
| Leaves? | Y N ? | Less than 5% 5-24% 25-49% 50-74% 75-94% 95% or more |
| Colored Leaves? (brown or yellow) | Y N ? | Less than 5% 5-24% 25-49% 50-74% 75-94% 95% or more |
| Falling Leaves? | Y N ? | |
| Flowers or Flower Buds? | Y N ? | Less than 3 3-10 11-100 101-10,000 More than 10,000 |
| Open Flowers? | Y N ? | Less than 5% 5-24% 25-49% 50-74% 75-94% 95% or more |
| Fruits? (green or tan bean pod) | Y N ? | Less than 3 3-10 11-100 101-10,000 More than 10,000 |
| Ripe Fruits? (tan bean pod) | Y N ? | Less than 5% 5-24% 25-49% 50-74% 75-94% 95% or more |
| Fruits or Seeds on the ground? | Y N ? | Less than 3 3-10 11-100 101-10,000 More than 10,000 |

Scientific Name: Prosopis Velutina

Nickname: Velvet Mesquite

Site: Borton Interior Courtyard

Date: _____

Observer: _____



| Do you see ... | Phenophase | Circle the Value | | |
|--|------------|------------------|------------------|-------------|
| Young Leaves? (small, just unfolding) | Y N ? | Less than 3 | 3-10 | 11-100 |
| | | 101-10,000 | More than 10,000 | |
| Leaves? | Y N ? | Less than 5% | 5-24% | 25-49% |
| | | 50-74% | 75-94% | 95% or more |
| Colored Leaves? (brown or yellow) | Y N ? | Less than 5% | 5-24% | 25-49% |
| | | 50-74% | 75-94% | 95% or more |
| Falling Leaves? | Y N ? | | | |
| Flowers or Flower Buds? | Y N ? | Less than 3 | 3-10 | 11-100 |
| | | 101-10,000 | More than 10,000 | |
| Open Flowers? | Y N ? | Less than 5% | 5-24% | 25-49% |
| | | 50-74% | 75-94% | 95% or more |
| Pollen? (shake tree; yellow pollen?) | Y N ? | Little | Some | Lots |
| Fruits? (green or tan bean pod) | Y N ? | Less than 3 | 3-10 | 11-100 |
| | | 101-10,000 | More than 10,000 | |
| Ripe Fruits? (tan bean pod) | Y N ? | Less than 5% | 5-24% | 25-49% |
| | | 50-74% | 75-94% | 95% or more |
| Fruits or Seeds on the ground? | Y N ? | Less than 3 | 3-10 | 11-100 |
| | | 101-10,000 | More than 10,000 | |

Scientific Name: Prosopis Velutina

Nickname: Velvet Mesquite

Site: Borton Interior Courtyard

Date: _____

Observer: _____



| Do you see ... | Phenophase | Circle the Value | | |
|--|------------|------------------|------------------|-------------|
| Young Leaves? (small, just unfolding) | Y N ? | Less than 3 | 3-10 | 11-100 |
| | | 101-10,000 | More than 10,000 | |
| Leaves? | Y N ? | Less than 5% | 5-24% | 25-49% |
| | | 50-74% | 75-94% | 95% or more |
| Colored Leaves? (brown or yellow) | Y N ? | Less than 5% | 5-24% | 25-49% |
| | | 50-74% | 75-94% | 95% or more |
| Falling Leaves? | Y N ? | | | |
| Flowers or Flower Buds? | Y N ? | Less than 3 | 3-10 | 11-100 |
| | | 101-10,000 | More than 10,000 | |
| Open Flowers? | Y N ? | Less than 5% | 5-24% | 25-49% |
| | | 50-74% | 75-94% | 95% or more |
| Pollen? (shake tree; yellow pollen?) | Y N ? | Little | Some | Lots |
| Fruits? (green or tan bean pod) | Y N ? | Less than 3 | 3-10 | 11-100 |
| | | 101-10,000 | More than 10,000 | |
| Ripe Fruits? (tan bean pod) | Y N ? | Less than 5% | 5-24% | 25-49% |
| | | 50-74% | 75-94% | 95% or more |
| Fruits or Seeds on the ground? | Y N ? | Less than 3 | 3-10 | 11-100 |
| | | 101-10,000 | More than 10,000 | |

Scientific Name: *Caesalpinia Pulcherrima*

Nickname: Mexican Bird of Paradise 1

Site: Borton Interior Courtyard

Date: _____

Observer: _____



Scientific Name: *Caesalpinia Pulcherrima*

Nickname: Mexican Bird of Paradise 1

Site: Borton Interior Courtyard

Date: _____

Observer: _____



| Do you see ... | Phenophase | What Value? |
|--|------------|--|
| Initial Growth? New growth (green tips) are visible from branches | Y N ? | |
| Leaves? (fully branched out) | Y N ? | Less than 3 3-10 11-100 101-10,000 More than 10,000 |
| Flowers or Flower Buds? | Y N ? | Less than 3 3-10 11-100 101-10,000 More than 10,000 |
| Open Flowers? | Y N ? | Less than 5% 5-24% 25-49% 50-74% 75-94% 95% or more |
| Fruits? (green seed pods) | Y N ? | Less than 3 3-10 11-100 101-10,000 More than 10,000 |
| Ripe Fruits? (seed pods turned red/brown) | Y N ? | Less than 5% 5-24% 25-49% 50-74% 75-94% 95% or more |
| Fruits or seeds on the ground? | Y N ? | Less than 3 3-10 11-100 101-10,000 More than 10,000 |

| Do you see ... | Phenophase | What Value? |
|--|------------|--|
| Initial Growth? New growth (green tips) are visible from branches | Y N ? | |
| Leaves? (fully branched out) | Y N ? | Less than 3 3-10 11-100 101-10,000 More than 10,000 |
| Flowers or Flower Buds? | Y N ? | Less than 3 3-10 11-100 101-10,000 More than 10,000 |
| Open Flowers? | Y N ? | Less than 5% 5-24% 25-49% 50-74% 75-94% 95% or more |
| Fruits? (green seed pods) | Y N ? | Less than 3 3-10 11-100 101-10,000 More than 10,000 |
| Ripe Fruits? (seed pods turned red/brown) | Y N ? | Less than 5% 5-24% 25-49% 50-74% 75-94% 95% or more |
| Fruits or seeds on the ground? | Y N ? | Less than 3 3-10 11-100 101-10,000 More than 10,000 |

Scientific Name: *Caesalpinia Pulcherrima*

Nickname: Mexican Bird of Paradise 2

Site: Borton Interior Courtyard

Date: _____

Observer: _____



Scientific Name: *Caesalpinia Pulcherrima*

Nickname: Mexican Bird of Paradise 2

Site: Borton Interior Courtyard

Date: _____

Observer: _____



| Do you see ... | Phenophase | What Value? |
|--|------------|--|
| Initial Growth? New growth (green tips) are visible from branches | Y N ? | |
| Leaves? (fully branched out) | Y N ? | Less than 3 3-10 11-100 101-10,000 More than 10,000 |
| Flowers or Flower Buds? | Y N ? | Less than 3 3-10 11-100 101-10,000 More than 10,000 |
| Open Flowers? | Y N ? | Less than 5% 5-24% 25-49% 50-74% 75-94% 95% or more |
| Fruits? (green seed pods) | Y N ? | Less than 3 3-10 11-100 101-10,000 More than 10,000 |
| Ripe Fruits? (seed pods turned red/brown) | Y N ? | Less than 5% 5-24% 25-49% 50-74% 75-94% 95% or more |
| Fruits or seeds on the ground? | Y N ? | Less than 3 3-10 11-100 101-10,000 More than 10,000 |

| Do you see ... | Phenophase | What Value? |
|--|------------|--|
| Initial Growth? New growth (green tips) are visible from branches | Y N ? | |
| Leaves? (fully branched out) | Y N ? | Less than 3 3-10 11-100 101-10,000 More than 10,000 |
| Flowers or Flower Buds? | Y N ? | Less than 3 3-10 11-100 101-10,000 More than 10,000 |
| Open Flowers? | Y N ? | Less than 5% 5-24% 25-49% 50-74% 75-94% 95% or more |
| Fruits? (green seed pods) | Y N ? | Less than 3 3-10 11-100 101-10,000 More than 10,000 |
| Ripe Fruits? (seed pods turned red/brown) | Y N ? | Less than 5% 5-24% 25-49% 50-74% 75-94% 95% or more |
| Fruits or seeds on the ground? | Y N ? | Less than 3 3-10 11-100 101-10,000 More than 10,000 |

Scientific Name: Hesperaloe Parviflora

Nickname: Red Yucca

Site: Borton Interior Courtyard

Date: _____

Observer: _____



Scientific Name: Hesperaloe Parviflora

Nickname: Red Yucca

Site: Borton Interior Courtyard

Date: _____

Observer: _____



| Do you see ... | Phenophase | What Value? | | |
|--|------------|--------------|------------------|-------------|
| Flowers or Flower Buds? (red flowers on top of branches) | Y N ? | Less than 3 | 3-10 | 11-100 |
| | | 101-10,000 | More than 10,000 | |
| Open Flowers? | Y N ? | Less than 5% | 5-24% | 25-49% |
| | | 50-74% | 75-94% | 95% or more |
| Fruits? (a capsule that changes from green to brown) | Y N ? | Less than 3 | 3-10 | 11-100 |
| | | 101-10,000 | More than 10,000 | |
| Ripe Fruits? (capsule is now brown) | Y N ? | Less than 5% | 5-24% | 25-49% |
| | | 50-74% | 75-94% | 95% or more |
| Fruits or seeds on the ground? | Y N ? | Less than 3 | 3-10 | 11-100 |
| | | 101-10,000 | More than 10,000 | |

| Do you see ... | Phenophase | What Value? | | |
|--|------------|--------------|------------------|-------------|
| Flowers or Flower Buds? (red flowers on top of branches) | Y N ? | Less than 3 | 3-10 | 11-100 |
| | | 101-10,000 | More than 10,000 | |
| Open Flowers? | Y N ? | Less than 5% | 5-24% | 25-49% |
| | | 50-74% | 75-94% | 95% or more |
| Fruits? (a capsule that changes from green to brown) | Y N ? | Less than 3 | 3-10 | 11-100 |
| | | 101-10,000 | More than 10,000 | |
| Ripe Fruits? (capsule is now brown) | Y N ? | Less than 5% | 5-24% | 25-49% |
| | | 50-74% | 75-94% | 95% or more |
| Fruits or seeds on the ground? | Y N ? | Less than 3 | 3-10 | 11-100 |
| | | 101-10,000 | More than 10,000 | |



Scientific Name: Tecoma Stans

Nickname: Yellow Bells

Site: Borton Interior Courtyard

Date: _____

| Do you see ... | Phenophase | What Value? | | |
|--|------------|--------------|------------------|-------------|
| Initial Growth? New growth (green tips) are visible from branches | Y N ? | | | |
| Leaves? (fully open) | Y N ? | Less than 3 | 3-10 | 11-100 |
| | | 101-10,000 | More than 10,000 | |
| Flowers or Flower Buds? | Y N ? | Less than 3 | 3-10 | 11-100 |
| | | 101-10,000 | More than 10,000 | |
| Open Flowers? | Y N ? | Less than 5% | 5-24% | 25-49% |
| | | 50-74% | 75-94% | 95% or more |
| Fruits? (long, skinny green seed pods) | Y N ? | Less than 3 | 3-10 | 11-100 |
| | | 101-10,000 | More than 10,000 | |
| Ripe Fruits? (seed pods turned tan/brown) | Y N ? | Less than 5% | 5-24% | 25-49% |
| | | 50-74% | 75-94% | 95% or more |
| Fruits or seeds on the ground? | Y N ? | Less than 3 | 3-10 | 11-100 |
| | | 101-10,000 | More than 10,000 | |



Scientific Name: Tecoma Stans

Nickname: Yellow Bells

Site: Borton Interior Courtyard

Date: _____

| Do you see ... | Phenophase | What Value? | | |
|--|------------|--------------|------------------|-------------|
| Initial Growth? New growth (green tips) are visible from branches | Y N ? | | | |
| Leaves? (fully open) | Y N ? | Less than 3 | 3-10 | 11-100 |
| | | 101-10,000 | More than 10,000 | |
| Flowers or Flower Buds? | Y N ? | Less than 3 | 3-10 | 11-100 |
| | | 101-10,000 | More than 10,000 | |
| Open Flowers? | Y N ? | Less than 5% | 5-24% | 25-49% |
| | | 50-74% | 75-94% | 95% or more |
| Fruits? (long, skinny green seed pods) | Y N ? | Less than 3 | 3-10 | 11-100 |
| | | 101-10,000 | More than 10,000 | |
| Ripe Fruits? (seed pods turned tan/brown) | Y N ? | Less than 5% | 5-24% | 25-49% |
| | | 50-74% | 75-94% | 95% or more |
| Fruits or seeds on the ground? | Y N ? | Less than 3 | 3-10 | 11-100 |
| | | 101-10,000 | More than 10,000 | |

Scientific Name: Prosopis Glandulosa

Nickname: Western Honey Mesquite

Site: Borton Interior Courtyard

Date: _____

Observer: _____



| Do you see ... | Phenophase | Circle the Value | | |
|--|------------|------------------|------------------|-------------|
| Young Leaves? (small, just unfolding) | Y N ? | Less than 3 | 3-10 | 11-100 |
| | | 101-10,000 | More than 10,000 | |
| Leaves? | Y N ? | Less than 5% | 5-24% | 25-49% |
| | | 50-74% | 75-94% | 95% or more |
| Colored Leaves? (brown or yellow) | Y N ? | Less than 5% | 5-24% | 25-49% |
| | | 50-74% | 75-94% | 95% or more |
| Falling Leaves? | Y N ? | | | |
| Flowers or Flower Buds? | Y N ? | Less than 3 | 3-10 | 11-100 |
| | | 101-10,000 | More than 10,000 | |
| Open Flowers? | Y N ? | Less than 5% | 5-24% | 25-49% |
| | | 50-74% | 75-94% | 95% or more |
| Pollen? (shake tree; yellow pollen?) | Y N ? | Little | Some | Lots |
| Fruits? (green or tan bean pod) | Y N ? | Less than 3 | 3-10 | 11-100 |
| | | 101-10,000 | More than 10,000 | |
| Ripe Fruits? (tan bean pod) | Y N ? | Less than 5% | 5-24% | 25-49% |
| | | 50-74% | 75-94% | 95% or more |
| Fruits or Seeds on the ground? | Y N ? | Less than 3 | 3-10 | 11-100 |
| | | 101-10,000 | More than 10,000 | |

Scientific Name: Prosopis Glandulosa

Nickname: Western Honey Mesquite

Site: Borton Interior Courtyard

Date: _____

Observer: _____



| Do you see ... | Phenophase | Circle the Value | | |
|--|------------|------------------|------------------|-------------|
| Young Leaves? (small, just unfolding) | Y N ? | Less than 3 | 3-10 | 11-100 |
| | | 101-10,000 | More than 10,000 | |
| Leaves? | Y N ? | Less than 5% | 5-24% | 25-49% |
| | | 50-74% | 75-94% | 95% or more |
| Colored Leaves? (brown or yellow) | Y N ? | Less than 5% | 5-24% | 25-49% |
| | | 50-74% | 75-94% | 95% or more |
| Falling Leaves? | Y N ? | | | |
| Flowers or Flower Buds? | Y N ? | Less than 3 | 3-10 | 11-100 |
| | | 101-10,000 | More than 10,000 | |
| Open Flowers? | Y N ? | Less than 5% | 5-24% | 25-49% |
| | | 50-74% | 75-94% | 95% or more |
| Pollen? (shake tree; yellow pollen?) | Y N ? | Little | Some | Lots |
| Fruits? (green or tan bean pod) | Y N ? | Less than 3 | 3-10 | 11-100 |
| | | 101-10,000 | More than 10,000 | |
| Ripe Fruits? (tan bean pod) | Y N ? | Less than 5% | 5-24% | 25-49% |
| | | 50-74% | 75-94% | 95% or more |
| Fruits or Seeds on the ground? | Y N ? | Less than 3 | 3-10 | 11-100 |
| | | 101-10,000 | More than 10,000 | |